



Parkhill Road NW3

Parkheath  
*Sold on Service*









**Parkheath**  
*Sold on Service*

**Camden Tax band E**

## **Parkhill Road, NW3**

### **Asking Price £625,000**

### **Share of Freehold**

- Attractive 2 bedroom first floor apartment
- Set within an imposing double fronted, sympathetically restored detached modern period conversion
- 2 double bedrooms with fitted wardrobes in the principal bedroom
- Share of Freehold
- Allocated parking space at the rear
- 17ft open plan kitchen/living area
- Modern finish throughout
- Close to all Belsize Park amenities
- Walking distance to Hampstead Heath, South End Green and Primrose Hill
- EPC Rating: C, Council Tax: Camden band E

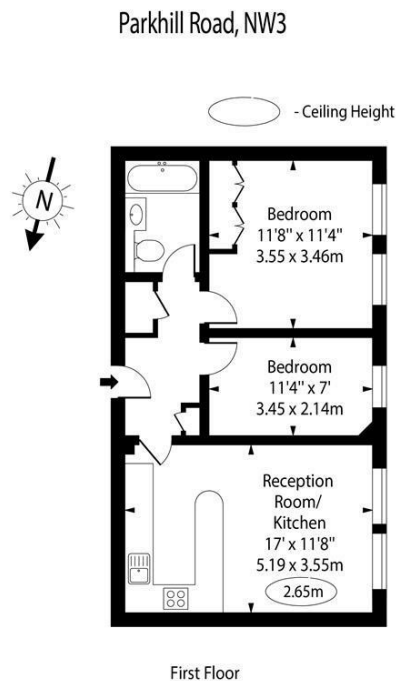
Belsize Park/Hampstead  
208 Haverstock Hill  
NW3 2AG  
Sales 020 7431 1234  
Lettings 020 7431 3104  
[nw3@parkheath.com](mailto:nw3@parkheath.com)

Kensal Rise  
54-56 Chamberlayne Rd  
NW10 3JH  
Tel 020 8960 4845  
[kensal@parkheath.com](mailto:kensal@parkheath.com)

South/West Hampstead  
192 West End Lane  
NW6 1SG  
Sales & Lettings  
Tel 020 7794 7111  
[192@parkheath.com](mailto:192@parkheath.com)

Property Management  
192 West End Lane  
NW6 1SG  
020 7433 6174  
[pm@parkheath.com](mailto:pm@parkheath.com)

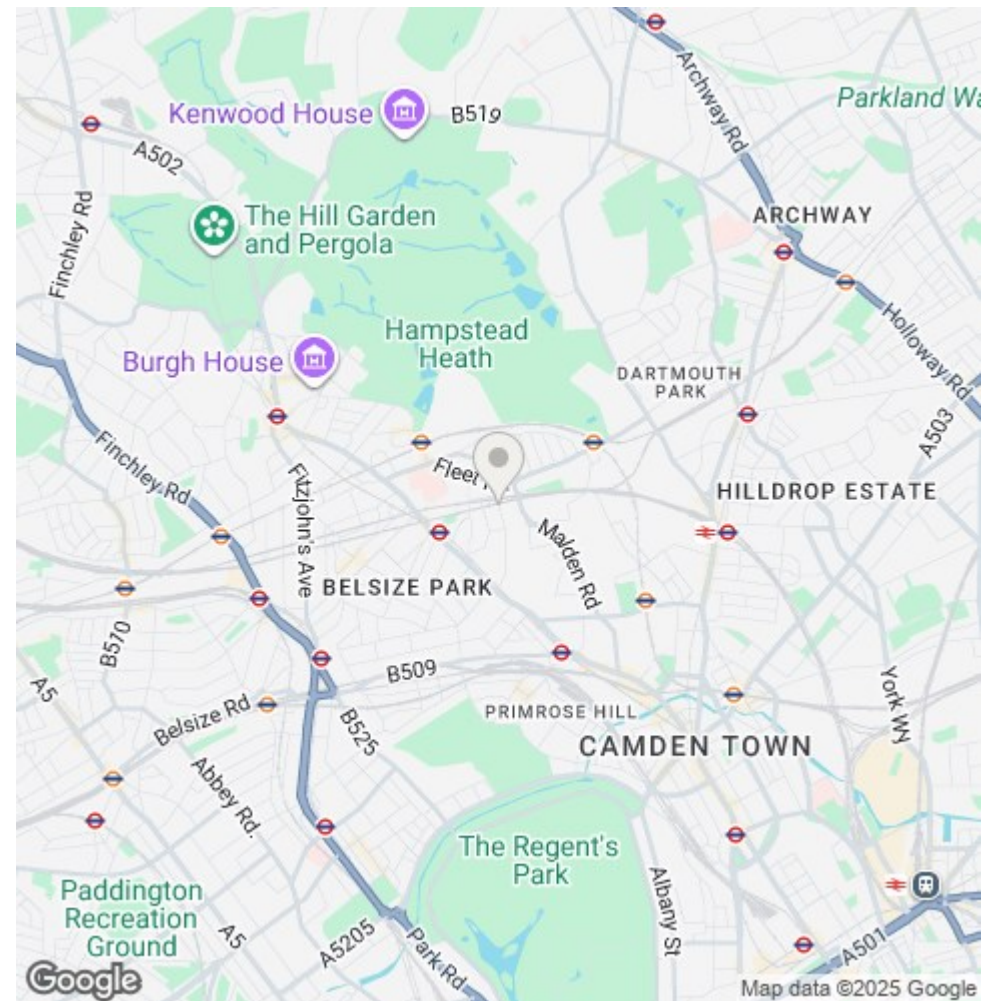
[www.parkheath.com](http://www.parkheath.com)



Approx Gross Internal Area 553 Sq Ft - 51.41 Sq M

For Illustration Purposes Only - Not To Scale Floor Plan by [www.nogaphotostudio.com](http://www.nogaphotostudio.com) Ref: No.53024

This floor plan should be used as a general outline for guidance only. Any intending purchaser or lessee should satisfy themselves by inspection, searches, enquiries and full survey as to the correctness of each statement. Any areas, measurements or distances quoted are approximate and should not be used to value a property or be the basis of any sale or let.



The particulars do not constitute part of an offer or contract. The particulars, including text, photographs and plans, are for the guidance only of prospective purchasers/tenants and must not be relied upon as statements of fact. The descriptions provided therein represent the opinion of the author and whilst given in good faith should not be construed as statements of fact. Nothing in these particulars shall be deemed a statement that the property is in good condition or otherwise or that any services or facilities are in good working order. All measurements are approximate